

# MIX

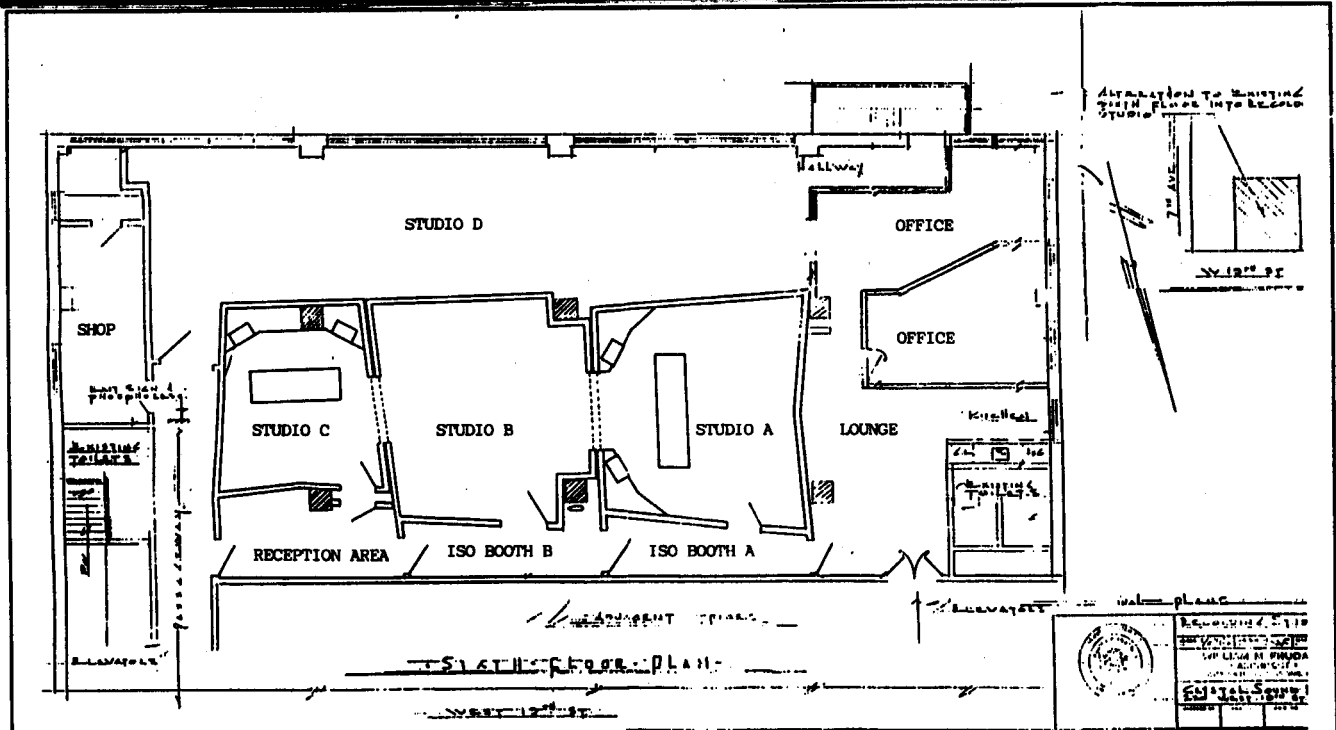
## SIGNAL PROCESSORS

- Their Future in Audio
- Digital Models Around \$500
- Vintage Gear in the Studios

## THE RECORDING INDUSTRY MAGAZINE

### The Urban Recording Environment

Interview:  
David Lindley



### Crystal Sound Recording

In view of its location in the heart of New York City's Chelsea district, it was important that Crystal Sound Recording maximize its use of space. With an idea toward modular design, two control rooms (studios A and C) were built to share the two main playing rooms (studios B and D). A hallway runs along

sides A, B and C and can be converted into two separate isolation booths, each with visual communication, microphone lines and cue feeds. When the iso booths are in use, record lights over each access door are illuminated. The iso booth/hallway also serves as a sound lock between the rooms.

When tracking in studio A (the main 24-track control room), engineers also have the option of using studio C (the 2-inch, 16-track room) as a large drum iso booth. The layout of the three rooms allows unimpeded visual communication between musicians in B and C, and the control room staff in A.